

Combined Refrigerator and Freezer Unit



HYCD-469A

HYCD-469

Scope of Application

This product is designed to store frozen plasma, biomaterials, vaccines, electronic devices and low temperature tests of special materials, in blood stations, hospitals, epidemic prevention stations, universities, scientific research institutes, electronic chemical industry and other enterprise laboratories.

Innovative Design

- ◎ Hydrocarbon Energy Saving
- ◎ Environmentally Friendly
- ◎ Safe, Secure and Reliable
- ◎ Intelligent Control

Product Advantages



Frequency Conversion and Energy Saving

Frequency conversion high efficiency compressor, optimized refrigeration system, more energy saving.



Green Environmental Protection

- Hydrocarbon compressor, hydrocarbon refrigerant, completely green refrigeration system.
- Cyclopentane foamed polyurethane insulation layer, the whole series conform to the european ROHS directive material, green environmental protection.



Large Space, Good Uniformity, Accurate Temperature Control

- Built-in evaporator, large space in the box, shelf/partition adjustable.
- Temperature uniformity of refrigerator $\pm 3^{\circ}\text{C}$; Control accuracy 0.1°C .
- Freezer temperature uniformity $\pm 5^{\circ}\text{C}$; Control accuracy 1°C .



Stainless Steel Inner for Easy Cleaning

Stainless steel inner tank is corrosion resistant and easy to clean.



Microprocessor Control System

- Microprocessor temperature controller:
Refrigerator adjustable temperature $2\sim 8^{\circ}\text{C}$, display accuracy at 0.1°C ;
Freezer adjustable temperature $-10\sim -40^{\circ}\text{C}$, display accuracy at 1°C .
- Multiple alarm functions including high/low temperature alarm, sensor error alarm, power failure alarm, low battery alarm, door ajar alarm and high ambient temperature alarm.
- Two types of alarm indications: audible buzzer and visible flashing light. Alarm lasts for more than 48 hours after power failure.
- Standard USB & optional printer.

Ergonomic Design



Equipped with padlocks in both refrigerator and freezer to ensure storage safety



- Equipped with electrically heated glass to prevent condensation effectively (HYCD-469A)
- Equipped with overcurrent protection to ensure usage safety



Two test holes for both refrigerator and freezer as standard, allow independent testing of cabinet temperature



Refrigerator and freezer are equipped with self-closing hinges to avoid door ajar (less than 90° self-closing)

Combined Refrigerator and Freezer Unit

Product Parts Diagram



- Microcomputer controller with dual display and separate control
- Microprocessor temperature control accuracy 0.1°C (refrigerator) and 1°C (freezer)

USB interface for easier data transfer

Dual fan system providing high refrigeration efficiency with a better temperature uniformity and stability

Equipped with LED lights in the refrigerator

Equipped with three adjustable dip plastic shelves in the refrigerator

Glass door (HYCD-469A)

Equipped with padlocks in both refrigerator and freezer to ensure storage safety

Stainless steel tank

Equipped with three adjustable stainless steel shelves in the freezer, with three optional plastic drawers for different needs

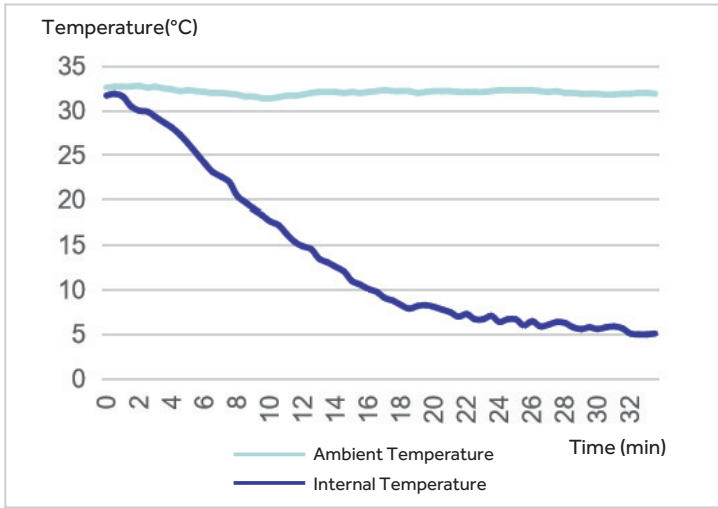
Four casters and two levelling legs for ease of maneuvering and positioning



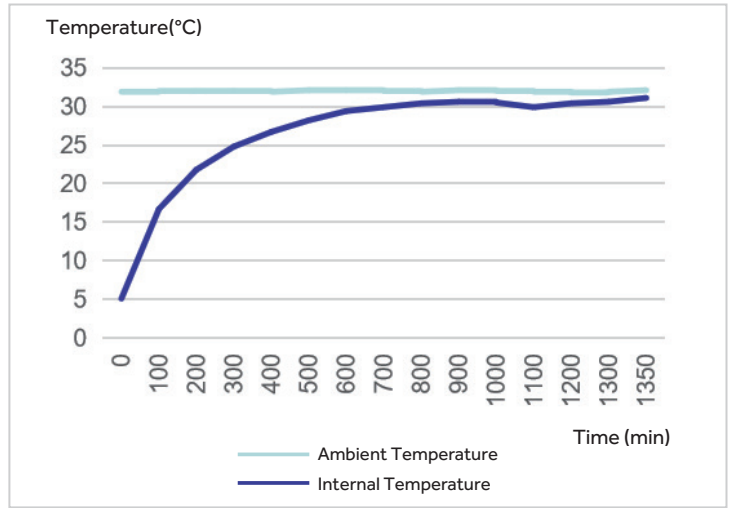
32°C Ambient Temperature Curve



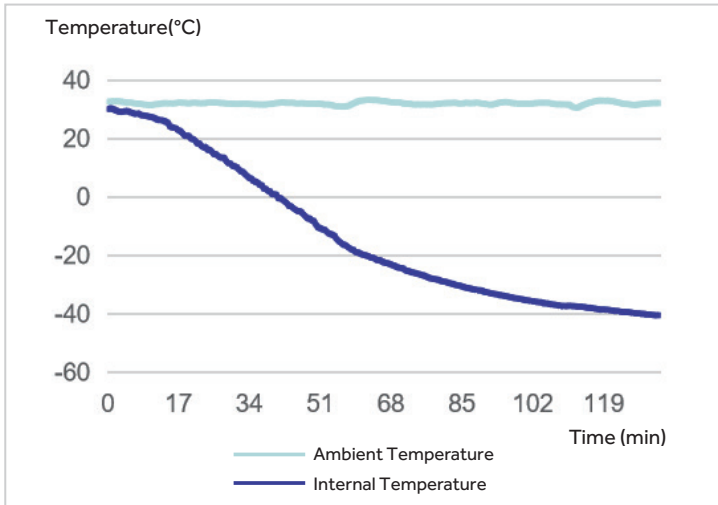
Refrigerator Cool Down Curve



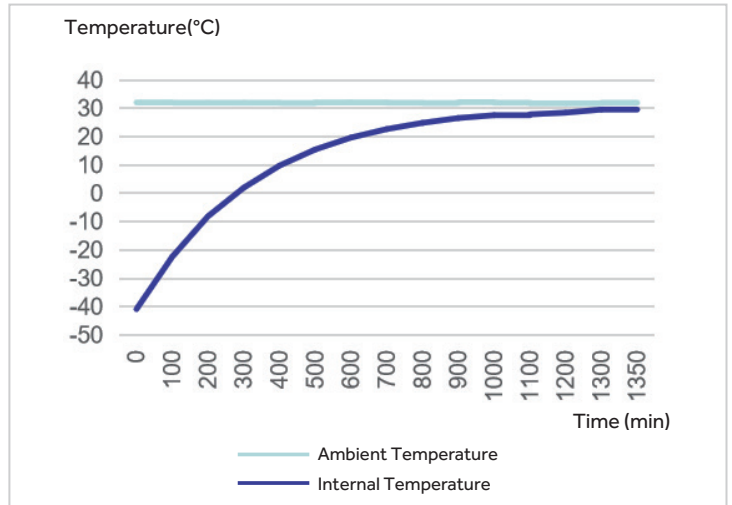
Refrigerator Warm Up Curve



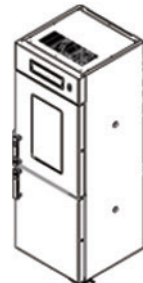
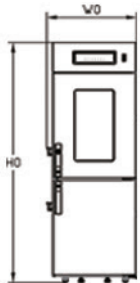
Freezer Cool Down Curve



Freezer Warm Up Curve



Dimensions



W0-Total Width
 W1-Refrigerator Width
 W2-Freezer Width
 D0-Total Depth
 D1-Refrigerator Depth
 D2-Freezer Depth
 H0-Total Height
 H1-Refrigerator Height
 H2-Freezer Height

W0	W1	W2	D0	D1	D2	H0	H1	H2
738	593	553	834	585	545	1975	800	660

Combined Refrigerator and Freezer Unit

Specifications



Model		HYCD-469	HYCD-469A	
Technical Data	Cabinet Type	Upright	Upright	
	Climate Class	N (16~32°C)	N (16~32°C)	
	Cooling Type	Refrigerator: Forced air cooling Freezer: Direct cooling	Refrigerator: Forced air cooling Freezer: Direct cooling	
	Defrost Mode	Refrigerator: Auto / Freezer: Manual	Refrigerator: Auto / Freezer: Manual	
	Refrigerant	Refrigerator: R600a / Freezer: R290	Refrigerator: R600a / Freezer: R290	
	Sound Level (dB(A))	45	45	
Performance	Temperature Range (°C)	Refrigerator: 2-8 / Freezer: -10~-40	Refrigerator: 2-8 / Freezer: -10~-40	
Control	Controller	Microprocessor	Microprocessor	
	Display	LED	LED	
Electrical Data	Power Supply (V/Hz)	220-240/50/60	220-240/50/60	
	Power (W)	640	640	
	Electrical Current (A)	3	3	
Dimensions	Capacity (L/Cu.Ft)	Refrigerator: 269/9.5; Freezer: 200/7.1	Refrigerator: 269/9.5; Freezer: 200/7.1	
	Net/Gross Weight (approx)	kg	176/207	176/207
		lbs	388.0/456.4	388.0/456.4
	Interior Dimensions (W*D*H)	mm	Refrigerator: 593*585*800 Freezer: 553*545*660	Refrigerator: 593*585*800 Freezer: 553*545*660
		in	Refrigerator: 23.3*23.0*31.5 Freezer: 21.8*21.5*26.0	Refrigerator: 23.3*23.0*31.5 Freezer: 21.8*21.5*26.0
	Exterior Dimensions (W*D*H)	mm	738*834*1975	738*834*1975
		in	29.1*32.8*77.8	29.1*32.8*77.8
	Packing Dimensions (W*D*H)	mm	800*875*2100	800*875*2100
in		31.5*34.4*82.7	31.5*34.4*82.7	
Container Load (20'/40'/40'H)		14/28/28	14/28/28	
Alarms	High/Low Temperature	Y	Y	
	Sensor Error	Y	Y	
	Power Failure	Y	Y	
	Door Ajar	Y	Y	
	Remote Alarm	Y	Y	
	High Ambient Temperature	Y	Y	
	Low Battery	Y	Y	
Accessories	Caster	Y	Y	
	Foot	Y	Y	
	Porthole	Y	Y	
	Shelves/Drawers	Refrigerator: 3/0 Freezer: 3/0 (Max 3 Drawers optional, without sliding rack)		
	USB Interface	Y	Y	
Others	Certification	CE	CE	



WolfLabs

Pricing on any accessories shown can be found by keying the part number into the search box on our website.

The specifications listed in this brochure are subject to change by the manufacturer and therefore cannot be guaranteed to be correct. If there are aspects of the specification that must be guaranteed, please provide these to our sales team so that details can be confirmed.

www.wolflabs.co.uk

Tel : 01759 301142

Fax : 01759 301143

sales@wolflabs.co.uk

Please contact us if this literature doesn't answer all your questions.